

# Co-creating a multicomponent GARDEN USE INTERVENTION in a nursing home incorporating the PHYSICAL, SOCIAL, and ORGANIZATIONAL environment

## Introduction

Studies examining the effect of garden use on quality of life in people living with dementia in nursing homes mostly focus on the evaluation of effects of specifically designed gardens, but the complex care environment of nursing homes needs a more holistic intervention.

## Research aim

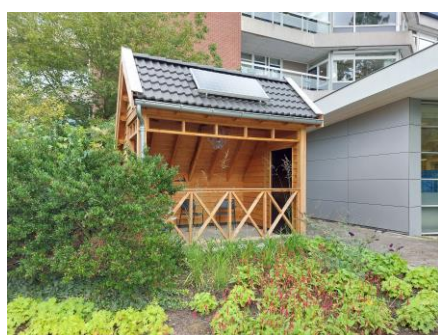
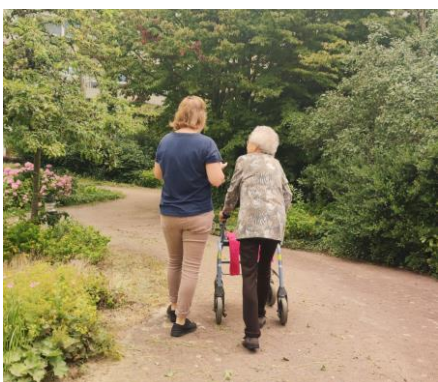
- To develop a multicomponent garden use intervention incorporating physical, social, and organizational environmental components in co-creation with stakeholders
- To incorporate garden use in daily nursing home practice

## Methods

A co-creation study with stakeholders of a traditional nursing home in the Netherlands. A project team with a location-, care-, and strategic housing managers, and a garden and landscape architect was formed, in which the researcher had the role of advisor. The researcher provided the necessary scientific knowledge based on literature and evidence-based practices to the project team, that informed the design of the intervention (2022-2024).



Contact: [m.van\\_der\\_velde@lumc.nl](mailto:m.van_der_velde@lumc.nl)



## Results



## Learning outcomes

- The development of complex interventions in nursing homes through co-creation ensures that the intervention is personalized and accustomed to the local nursing home culture and policy, which can have a positive effect on the adoption, implementation and sustainability of the intervention.
- A toolkit should also address the process of design.

## Preliminary discussion

To promote garden use by people living with dementia in nursing homes, it is important to take into account the physical, social and organizational environment when redesigning the garden.

