

How to DESIGN a nursing home GARDEN? An evidence-based practice TOOLKIT

Design process

Step 1 Program of Requirements



The members of the project team work together to draw up a program of requirements. Who will be the user groups of the garden? Will people from outside the nursing home be able to use the garden? To what extent will the garden be freely accessible to the nursing home residents?



Step 2 The Nursing Home Garden Checklist (NHGC)



The Nursing Home Garden Checklist (NHGC) is based on factors that affect the daily use of the garden. It is completed by at least 3 members of the project team, one of whom must be the garden and landscape architect. Elements on which members of the project team have provided different answers must be discussed. The results of the requirements program and the checklist are interpreted by the garden and landscape architect, who will then translate them into a first draft version of the garden improvement plan.



Step 3 Survey



All project team members review and discuss version 1 of the draft garden improvement plan. They then decide which questions they want answered by the garden's user groups. These user groups may include clients, (in)formal caregivers, volunteers, and others. These questions can then, for example, be collected in a survey and distributed to all user groups. Another option is to conduct semi-structured interviews.

Step 4 In-house expertise



The garden and landscape architect translates the survey results into version 2 of the draft garden improvement plan. This second version is discussed with representatives from various disciplines within the organization, such as occupational therapists, physical therapists, and psychologists. Their expertise covers different aspects of garden use, for example, regarding safety and experience.



Step 5 Definitive improvement plan



The garden and landscape architect translates the outcomes of the feedback from the various disciplines into version 3 of the draft garden improvement plan. This version is discussed with all members of the project team. The garden and landscape architect then translates the results of this final discussion into a definitive version of the garden improvement plan.



Step 6 Evaluation



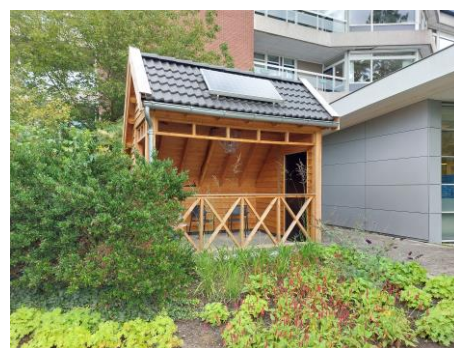
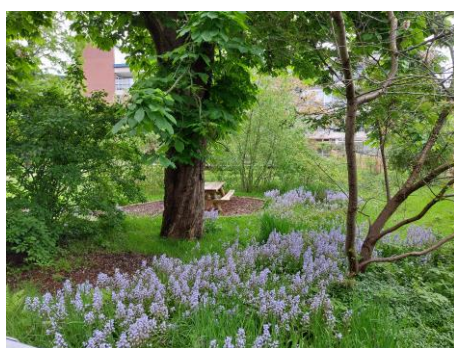
One year after the garden has been realized, the NHGC is completed again by at least 3 members of the project team, which must include the garden and landscape architect. The results are compared with the previous year. Any action points are assigned.



De Nursing Home Garden Checklist (NHGC)



VITALE TUIN



Contact: m.van_der_velde@lumc.nl